

NADE

THE ADVOCATE

VOLUME 32, NUMBER 2

A PUBLICATION
OF THE NATIONAL
ASSOCIATION OF
DISABILITY
EXAMINERS

SPRING ISSUE 2016

HAPPY 50TH BIRTHDAY, ADVOCATE!



Photo: Shutterstock



Lucian "Lu" Zadrozny, our first editor, published Volume 1, Number 1 of *The Advocate* in February, 1966. Mr. Zadrozny died at the age of 91 in February, 2013 in North Carolina after a lifetime of service. His long resume included work as an educational consultant, a physical therapist, a vocational rehabilitation counselor, a Navy

veteran and veteran of the Coast Guard. An accomplished sculptor and watercolorist, he designed NADE's logo! His work as editor of *The Advocate* is mentioned in his obituary, found here: <http://tinyurl.com/hgh3fwp>. We salute you, Lu!

Find more about *The Advocate's* first issue inside!



IN THIS ISSUE

President's Message	P2
Berryhill Visits Mid-Year	P3
Clemons & ODP	P4
Ann Roberts & BBA	P6
Patrick O'Carroll, Adieu	P7
Awards Nominations	P9
Getting to Know You	P12
Blast from the Past	P13
Conference Agenda	P16
Conference Registration	P19
Job Openings	P21



WINNER: PHOTO CONTEST

Sara Winn

A MESSAGE FROM YOUR PRESIDENT, SHARON SUMMERS



The past few months have been very busy for the NADE Board and the Executive Officers. The NADE Mid-Year Board Meeting took place at the Royal Sonesta Hotel in Baltimore, MD on February 25 and 26, 2016. It was cold and snappy near the Harbor but we all enjoyed the meetings, the networking and the friendships! I have to say, I am blessed with a very cohesive and dedicated Board. I hope you take some time to look through this issue to get a feel of the few days we spent together working hard and appreciating each other's professionalism and friendship. Each SSA Speaker gave excellent information to keep us up to date on the most important topics. They were

approachable, knowledgeable and efficient. NADE appreciates the time these excellent guests spent with us. You can see their pictures and the reports of their presentations in this issue.

The Legislative Director, Jennifer Nottingham, the President-Elect, Tonya Scott and I took the 2016 NADE TOP ISSUES to several committees on both sides of the aisle in the Legislative Buildings near the Capitol. We visited the Social Security Advisory Board, The Institute of Medicine, the Government Accountability Office, the Office of Management and Budget, the Congressional Budget Office and many other agencies associated with Social Security. The highlight of the week was a meeting with Acting Commissioner Carolyn Colvin. We wished her well upon her upcoming departure in January, 2017. NADE thanks her for her dedication to customer service for the citizens of the United States during her tenure. Whenever possible, she made herself available to NADE for National Training Conferences. She met with the NADE Executive Leadership for several years during our meetings in Washington, D.C. Many people have commended her willingness to sit down at a table and discuss good customer service or take questions with even small groups in our National Training Conference events. We will miss her.

We also made an exciting visit to Washington, D.C. Disability Determination Services. The NADE chapter there put together a very nice pizza luncheon after a grand tour of the office. We discussed recruitment with them, answered their questions, and supported them in their endeavors to build their chapter. We salute them for their tenacity to keep the chapter going.

Upcoming April events are for NADE's chosen charity, Donate Life. In June, we celebrate our professionalism in National Disability Professionals Week. In August, we go to Colorado for the 2016 NADE National Training Conference. We hope each DDS Director will utilize the SSA approved funding to send one delegate from each state.

NADE depends on your dedication to service. Let us show you how to build your membership through mentoring. Contact your Regional Directors and seek out those positions that may well lead you to an executive officer position one day. You have my very best wishes for advancement and leadership in NADE!

DEPUTY COMMISSIONER FOR OPERATIONS BERRYHILL SPEAKS

Nancy became Deputy Commissioner for Operations (DCO) in July 2013. She served as the Regional Commissioner for SSA's Chicago Region until March 3, 2011, and the Regional Commissioner for SSA's Denver Region until January 2006. While in the Denver Region, Nancy developed numerous innovative agency solutions such as video service delivery, use of webinars, and the first American Indian outreach guide.

A native of Chicago, Illinois, Nancy obtained her degree in Computer Science at the Control Data Institute in Chicago. Nancy is a graduate of the Kennedy School of Government at Harvard University.

Ms. Berryhill graciously accepted the National Association for Disability Examiner's (NADE) invitation to the February 2016 mid-year Board meeting to answer questions submitted by members and to discuss the SSA-DCO implementation of the Bipartisan Budget Act of 2015 (BBA). Attendees and their regional members shared their specific interest in the impact of the recent BBA on Disability Determination Services. Ms. Berryhill identified the following challenges:

- Medical Consultant (MC) Workloads. The elimination of the Single Decision Maker (SDM) and Disability Examiner Authority (DEA) is expected to have a profound effect on all DDS offices, not just SDM sanctioned states. It is estimated that the MC reviews will increase by 600,000 claims with the elimination of the SDM. To prepare for this shift in workload, SSA-DCO is examining potential solutions, including but not limited to: Increased MC hiring and MC remote workstations options.
- SSA FOs recently received approval for replacing staffing losses. It is expected with additional technical experts that there will be an improved focus on quality.
- Flexible Video Units for Disability Hearing Officers (DHO). This project is currently being piloted in the Chicago region, and includes the use of a single unit device with both encryption and a webcam. This portable equipment option allows claimants to visit their closest SSA FO, while the DHO can spend less time on travel and more time adjudicating claims. Early data from Illinois indicates the pilot is meeting expectations. Testing will be expanded in Fiscal Year 2016.
- Disability Claim Processing System (DCPS) Update: The DCPS core product is slated for delivery by the end of calendar year 2016. Implementation, testing and training activities in three "early adopter" sites (Delaware, Maine, and Ohio) are expected to start in late summer or early fall of 2016. User input remains critical to the project, which initially led to the project's reformation.



From left: Nancy Berryhill, Tonya Scott, Sharon Summers, Ann Robert and Jeff Price

Ms. Berryhill responded to NADE's questions, as always, thoughtfully and respectfully. Her clarifications of SSA operations and challenges provided significant program insight to the Board, providing NADE an opportunity to respond to these same challenges. Ms. Berryhill's presence at the NADE Mid-Year Board meeting was very well-received, and greatly appreciated.

OFFICE OF DISABILITY POLICY UPDATES MADE ON CHANGES NEAR AND FAR

By Kimberly Underwood and Jennifer Nottingham

The Board was pleased to hear from Gina Clemons Ph.D, Associate Commissioner, from the Office of Disability Policy (ODP) at the recent mid-year board meeting in Baltimore, MD. She was joined by Melissa Spencer, Deputy Associate Commissioner, ODP; Dan O'Brien, Director, ODP/Office of Vocational, Evaluation and Process Policy, and Cheryl Williams, Director, ODP/Office of Medical Policy.



From left: Jeff Price, Sharon Summers, Gina Clemmons, Cheryl Williams, Melissa Spencer, Dan O'Brien and Tonya Scott

Dr. Clemons and her team related that their office is currently working on a new Failure to Cooperate (FTC) process. There is a growing concern that vulnerable populations, such as homeless claimants, are able to navigate the system effectively. Further, there is interest in ensuring that the FTC policy is clear and reasonable for adjudicators. The main objective is to create a system that is effective as well as efficient for adjudicators. A workgroup including representatives from many headquarters components, the Regional Centers for Disability, and the DDS community is concentrating on creating a practical, reviewable, and consistent approach when deciding how to revise the process. They hope to have new draft POMS out for inter-component review by the end of May.

(continued next page)

Dr. Clemons also addressed the new regulations that will go into effect from the Bipartisan Budget Act (BBA). This is the top priority in ODP and is being given full attention. One of the main results of the BBA that they are working on is the loss of the Single Decision Maker. ODP is working in tandem with ODD and focusing on policy implications of this new law. ODP and ODD are also working on an implementation strategy for the BBA requirement to exclude certain evidence from specific providers who are felons, those receiving a Civil Monetary Penalty (“CMP”), assessment, or both for submitting false evidence, and those excluded from receiving reimbursement under a Federal health care program—such as Medicare and Medicaid. The goal is to implement a strategy consistent with the statutory intent and protective of claimants, but with minimal operational impact.

Other areas this office is working on include updating the Medical Listings, updating the policies for considering of medical evidence, and expanding the acceptable medical source list to include Nurse Practitioners and audiologists. The ODP team reported that the agency, led by the Office of Research, Demonstration, and Employment Support (ORDES), is also working with the Bureau of Labor Statistics (BLS) to obtain updated occupational information for use in an Occupational Information System (OIS), which will replace the DOT.

The new OIS will include many occupational descriptors similar to those adjudicators currently use in the DOT. The DOT contains discrete and well-established descriptions of the physical demands of occupations, but it does not provide information on the mental and cognitive requirements of occupations. The agency hopes to include mental and cognitive data elements in the OIS. However, this would be part of a separate BLS collection, so they are working hard to determine the most useful mental and cognitive elements before BLS performs further testing in this area. The agency’s goal is to have this new tool (without the mental and cognitive data elements) ready for use by 2019.

ANN ROBERT ADDRESSES BIPARTISAN BUDGET ACT

By Melissa Williamson

There was one word every SSA speaker used at the Mid-Year meeting to describe the changes presented in the Bipartisan Budget Act (BBA) and that word was, “shock”. Ann Robert, Associate Commissioner from the Office of Disability Determinations (ODD) stated there had been no indication the elimination of Single Decision Maker (SDM) and Disability Examiner Authority (DEA) authority would be part of the FY 16 Budget resolution prior to the release of the BBA. Due to these changes, ODD had to take immediate action to put an operations plan into place in collaboration with the DDSs and the Regional Offices. With these changes, a physician or psychologist review and signature is required on every case.

Although the BBA abolished the SDM status, Congress did not provide additional funding to hire the medical staff needed to compensate for its loss. Ann stated SSA is working with DDS offices to fund the necessary medical hires and is helping to recruit these doctors. The Medical Consultant Recruitment Workgroup, consisting of SSA and DDS representatives, developed recruitment flyers for this purpose. DDS offices and SSA regional offices have found success in recruiting Medical Consultants with these; they are located on the [ODD website](#).

Continuing Disability Review (CDR) currency is another requirement of the BBA. Ann explained this means all CDRs must be completed at the actual time they are due. She indicates the last time that CDR's were current was 2002. The CDR workload for FY 16 nationally is 850,000 cases and is expected to increase for FY 17.



Ann Robert

Ann expressed appreciation for NADE's work to educate and advocate on behalf of the DDS community. She also stated funding has been approved to send one person from each state to the NADE Training Conference in Denver. The Board thanks Ann for her continued support and enthusiasm for NADE's mission.

NADE BIDS ADIEU TO THE HON. PATRICK O'CARROLL

By Marcia Shantz, GLADE

During its mid-year meeting, the NADE Board was privileged to host an in-depth discussion of pertinent issues with the Honorable Patrick O'Carroll, Inspector General for the Social Security Administration. Having just recently submitted his letter of resignation to President Obama, the Inspector General began his remarks with the news that he would be retiring in May after an extended career that had taken him from various positions in the federal government to his current post: Inspector General for SSA. This news didn't come as a surprise to the NADE Board, who had heard about Mr. O'Carroll's impending retirement just days before. Board members surprised the Inspector General with a retirement party, complete with a cake and a heartfelt rendition of "Happy Retirement" in appreciation for the Inspector General's strong support for NADE over the years.

Mr. O'Carroll received a Bachelor of Science degree from Mount Saint Mary's College in Emmitsburg, Maryland, and a Master of Forensic Sciences from the George Washington University in Washington, D.C. He also attended the National Cryptologic School offered by the National Security Agency and the Kennedy School of Government at Harvard University. Mr. O'Carroll is a member of the International Association of Chiefs of Police, the Association of Government Accountants, and the National Academy of Public Administration. He is a widely recognized expert on social insurance programs, Social Security number integrity, and critical infrastructure protection.

O'Carroll began his remarks to the NADE Board with a descriptive report of his experiences while in government service. During his 26-year tenure in the Office of Inspector General, O'Carroll held a number of increasingly responsible positions, including Assistant Inspector General for Investigations and Assistant Inspector General for External Affairs. He was appointed to U.S. Inspector General in 2004, and is only the third person to ever hold that position.

The Office of Inspector General (OIG) currently employs a workforce of 530 auditors, attorneys, investigators, and support personnel nationwide. The results of their efforts can be seen in the OIG's most recent achievements. In Fiscal Year 2015, the OIG's investigators reported over \$700 million in investigative accomplishments through SSA recoveries, restitution, fines, settlements, judgments, and projected savings. In addition, the OIG's auditors issued 89 reports with recommendations identifying more than \$3 billion in Federal funds that could be put to better use, and over \$4 billion in questioned costs. Also, the OIG's attorneys reported over \$17 million in civil monetary penalties and assessments.



Current and past-presidents honor Patrick O'Carroll

Mr. O'Carroll provided the NADE Board with some updates on recent activities of the OIG staff, including the "big fish" recently apprehended as a result of OIG investigations. The [fisherman from the TV show, "Wicked Tuna," was arrested](#) and eventually pled guilty to Social Security disability fraud. He will be sentenced in May and, in addition to any probation or incarceration, will likely have to make full restitution. The Puerto Rico case is continuing with 90 prosecutions so far and more to come. It is estimated it will take two more years to complete this case!

Mr. O'Carroll shared many other case updates, including that the "Nightline" TV show is interested in an OIG case about a man in South Carolina who claimed to have MS and use a wheelchair, but OIG found him using a jet ski instead. In another case, a Utah man was collecting benefits with the claim that he could not walk yet he was found to be a marathon runner. The man had run in 13 marathons since 2001, and operated a photography business as well.

Mr. O'Carroll provided NADE Board members with updates on OIG audits. The audit of the DCPS Lockheed-Martin contract concluded they had delivered what had been requested. That did not mean, however, they delivered a product that users found "better" than what they had already. OIG is now auditing the contract SSA made with U.S. Digital Services to further design the DCPS program for individual states' use. The focus of the audit is to determine if there are benchmarks and deliverables that can be measured as SSA makes payments for services rendered.

The SSA OIG fraud 1-800 hotline is actively pursuing assistance with its many calls. The hotline is currently experiencing long wait times due to call volume and other factors. OIG has researched options to assist with answering calls to its hotline and is close to choosing a partner. This will guarantee that 100% of calls to the OIG hotline will be answered during business hours and will help eliminate wait times.

Perhaps the biggest news Mr. O'Carroll shared with the NADE board involved the Balanced Budget Act (BBA). The BBA mandated that the CDI Program would cover all 50 states. Mr. O'Carroll cautioned, however, that it may not be logistically possible to have a full unit in each state. Congress did not appropriate additional monies; the personnel needed to staff these new CDI units will have to be pulled from other assignments. Also, in some states where it is not feasible to have a full CDI unit, OIG may be able to deputize state or local investigators so they have Federal authority and can work cases across state lines. One example of this is in the Kansas City unit, where Missouri investigators may work cases in Kansas when the Kansas DDS makes referrals.

The BBA also included substantial increases in criminal and civil penalties for Social Security disability fraud for individuals who are facilitators in helping others to obtain disability benefits fraudulently. Unfortunately, the increase in these penalties must meet with approval from the United States Sentencing Commission. The Sentencing Commission is not expected to treat this change as a high priority; therefore, it's not likely to approve these changes for some time.

NADE bids "Farewell" to Inspector General Patrick O'Carroll. We proudly observe that, during his tenure as Inspector General for SSA, Mr. O'Carroll intensified OIG's efforts to identify and prevent fraud, waste, and abuse in SSA programs through innovative and collaborative approaches to the office's core functions, as well as the management and development of human and technological resources.

Thank you, Mr. O'Carroll for taking your time over the years to present at our conferences. You kept us keenly informed of the issues disability adjudicators should consider in the evaluation of disability claims. NADE is in full agreement with your opinion, delivered in testimony before Congress, that the best deterrent to fraud is "the well-trained disability examiner." We wish you well in your retirement! With that, we say "adieu."

Med Plus Med Val
Claude Earl Fox, MD MPH
41 Fort Royal Isle
Ft. Lauderdale FL 33308
800.293.1304

Gold Corporate Member

**Tri State Occupational
Medicine Inc**

Susan Gladys
612 Sixth Avenue
Huntington WV 25701
304.525.4202

susang@tsom.com

Gold Corporate Member

SUBMIT AWARD NOMINATIONS TODAY!

NADE presents awards to its members annually at the national conference. Please take a moment to reflect on the work your fellow members have done for NADE, their DDS offices and their communities over the past 12 months.

The nominating criteria are as follows:

- * Nominations must be submitted by June 1, 2015, to Trish Chaplin, NADE Awards Chair. These should be emailed to patricia.chaplin@ssa.gov. Award nominations must be submitted electronically.
- * The nomination form should be typed and should explain in detail how the nominee exemplified the specific criteria of each award. It is preferred that only the nominee's identifying information be listed on the nomination form while an additional page (s) is submitted to include the narrative for the nomination.
- * Please do not refer to the member or chapter by name in the nomination narrative. This will result in disqualification of the nomination! Attach the nomination form with the name of the award and the nominee to the written narrative contained on an additional page (s).
- * Each chapter is limited to one nomination per award.

The Awards Chair will submit all nominations to the Awards Committee members. The results will be announced at the Awards Luncheon at the NADE conference in Denver, Colorado in August 2016.

Please see the following page for a list of available awards.

LIST OF AWARDS

The **FRANK BARCLAY AWARD** is presented in recognition of an individual who has shown exceptional ability to motivate and challenge others, or to develop or promote programs which motivate and challenge others toward personal and professional growth/human resource development.

The **PRESIDENT'S AWARD** (NADE CHAPTER OF THE YEAR) is presented by the NADE President in recognition of an outstanding chapter.

The **LEWIS BUCKINGHAM AWARD** is a professional award honoring and recognizing a leader of the National Association of Disability Examiners at either the regional or national level.

The **EARL B. THOMAS AWARD** (DDS Administrator of the Year) is presented to a charter member of NADE who is totally committed to and actively supportive of all NADE stands for. It is made in recognition of an administrator of a disability agency for constant contributions to the Social Security Disability program that far exceed the responsibility or the position and who is actively supportive of the advancement of NADE.

The **CHARLES O. BLALOCK AWARD** is a service award in the name of NADE's founder. It is presented in recognition of an individual who has made extended efforts and major contributions toward the organizational advancement of NADE. This award is regarded as the second highest individual award presented by NADE for service to the national organization.

The **NADE AWARD** (Disability Professional of the Year) honors and recognizes the DISABILITY PROFESSIONAL of the year who has made outstanding contributions not only to the service of the claimant in accordance with his/her expertise but has contributed substantially of his/her time and talent to promote harmonious and more effective working relationships among his/her immediate professional community.

The **JOHN GORDON AWARD** (Supervisor of the Year) is presented in the name of John R. Gordon, honoring and recognizing superior performance of a supervisor.

The **DIRECTOR'S AWARD** (Support Staff) recognizes the work performance of an outstanding support staff member.

The **MARTY BLUM AWARD** (Rookie of the Year) honors and recognizes a disability professional who has made a significant contribution on a local, regional and/or national level to the National Association of Disability Examiners.

Please visit the NADE home page at www.nade.org for the full list of awards criteria and nomination form.

Calling for Candidates for the Election of 2017 NADE Officers

Once again, it is that time of year to start thinking about increasing your participation in the greatest professional organization for disability determination adjudicators and examiners in the United States. This is a call for 2017 NADE officer nominations.

Are you a member of NADE who is committed to the growth of the Disability Determination community? Are you willing to use your time, your energy and hard work to promote NADE's mission? Step up and take some time to serve on the NADE Executive Board!

The Nominations & Elections committee will accept nominations from all eligible members for the offices of President-elect; Secretary; and Treasurer. If you intend to announce your candidacy for one of these offices, please submit a brief summary of your NADE experience, DDS experience and a recent photo. Please note that the photo should not be larger than 300 dpi.

Nominations will be accepted from the floor during the General Membership meeting during the upcoming 2016 National Training Conference in Aurora, Colorado with elections to follow. Remember: advanced submission of your intent to run for office would afford you the opportunity to be published in the summer edition of the *NADE Advocate*.

Please review the NADE website (www.NADE.org) for further information about the duties and responsibilities of each office.

The Nomination & Elections committee includes:

Erin P Vincent
R Todd Deshong

GETTING TO KNOW YOU: Courtney Olivia of BRADE

NADE is excited to welcome the sole member of our chapter in Baton Rouge, LA. It's been about a year since we had a presence in BRADE, and we're thrilled with her plans for her chapter. Please join us in encouraging Courtney as she builds a membership from scratch!

How long have you been with DDS? What's your title? I have been with DDS for 8 years. I am the Disability Determinations Consultant (QA Consultant) for the Baton Rouge DDS.

What did you do before? I was a case manager at a local psychiatric facility. I'm passionate about mental illness awareness and hope to be more involved in mental health advocacy in the future.

Why did you join NADE? I want to help make my local office the best place it could be for me, my co-workers, and our claimants. I think NADE is a great place get started.

Favorite color? Purple

Favorite food? Macaroni and cheese or spaghetti

Favorite sports team? LSU Tigers!

Any pets? Bart, an eight year old black and white lab mix.

Hobbies? Playing with my daughter, Kaitlyn (age 2.5), reading, and fishing. I'm about to start golf lessons!

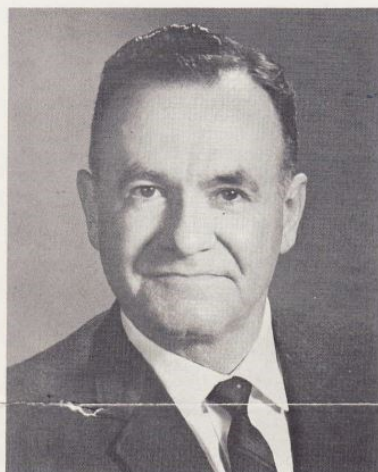
Ever met anyone famous? Country singer Trace Adkins and Carolyn Colvin

Zodiac sign? Gemini

Have you crossed anything off your bucket list? Yes! I've traveled outside the US, I've helped others in need via the Red Cross Action Disaster Team, I used to be a gymnast and recently participated in an adult gymnastics class!



A BLAST FROM OUR PAST



DR. F. W. NOVIS
President, NADE
1965 - 1966

Dr. Novis served SSA for 40 years. He retired 10 years after serving as President, in 1976. He died in Connecticut at the age of 84 in 1994. See more at: <http://tinyurl.com/h5cbl8j>

National NRA Conference Denver, Colorado

The National NRA-NADE Conference this year will be in picturesque Denver, Colorado, October 2-5.

50 years after the first Advocate went to print, the National Conference is returning to Colorado! Coincidence or fate?

Our New NADE Emblem

The NADE emblem and masthead of this newsletter, designed and illustrated by your editor, symbolizes the primary components of our profession. The medical and related aspects of a person's physical and/or mental condition, including age, are signified by the emblem's *caduceus*, which is given central importance. Other key areas such as occupations, vocational assessment, and education are respectively designated by the *gear* and burning *lamp* of knowledge.

Did Lu suspect that his design would last for 50 years? The fact that it has is a testament to his skills as an artist and a scholar.

Baltimore Meeting

Previously on October 11 and 12, our President represented NADE at a meeting of the Committee on Social Security Administrative Relationships, in Baltimore, Md. Among topics discussed were the use of the Social Security Trust Fund for Rehabilitation services, plus changes and model format of revised State Agency agreements.

50 years later, the Social Security Disability Trust Fund is still a hot item for discussion, and NADE remains a key participant in the debate. Our forefathers would be pleased and proud!

A LOOK BACK: SSA IN 1966

Source: <https://www.ssa.gov/history/1960.html>

- ◆ In January, SSA allowed benefits to be paid to a third party, or payee, if recipients were unable to manage them themselves.
- ◆ In January, SSA decided that people in medical or mental institutions could still receive federal public assistance funds.
- ◆ In May, the one-millionth disabled worker was added to the disability benefit rolls. Marlin Enders, a 51-year-old coal miner from Pennsylvania was awarded disability benefits for himself and his family.
- ◆ In July, President Lyndon Johnson signed into law the Freedom of Information Act. This law codified for the first time in federal administrative practice the idea that the public has a right to know what information the government maintains on its citizens.
- ◆ In November, a special three-judge Federal Court held the disclaimer of communist affiliation provision of the Medicare Law to be unconstitutional.

Also that year:

- Simon & Garfunkel's "The Sound of Silence" hit #1 on the pop charts. The Beach Boys sold a million records with "Good Vibrations."
- The warning, "Caution! Cigarette smoking may be hazardous to your health," was required by law to appear on all US cigarette packs.
- Ronald Regan announced his candidacy for Governor of California, and won.
- "Batman" with Adam West and Burt Ward premiered on ABC TV. "Star Trek" premiered on NBC. "How the Grinch Stole Christmas" aired for the first time on CBS.
- The Dow Jones Industrial Average: 785. Dow Jones Industrial Average for 2015: 17,711.
- Average income per year: \$6,900. A gallon of gas cost 32 cents.
- Hot new fashion: the mini skirt.



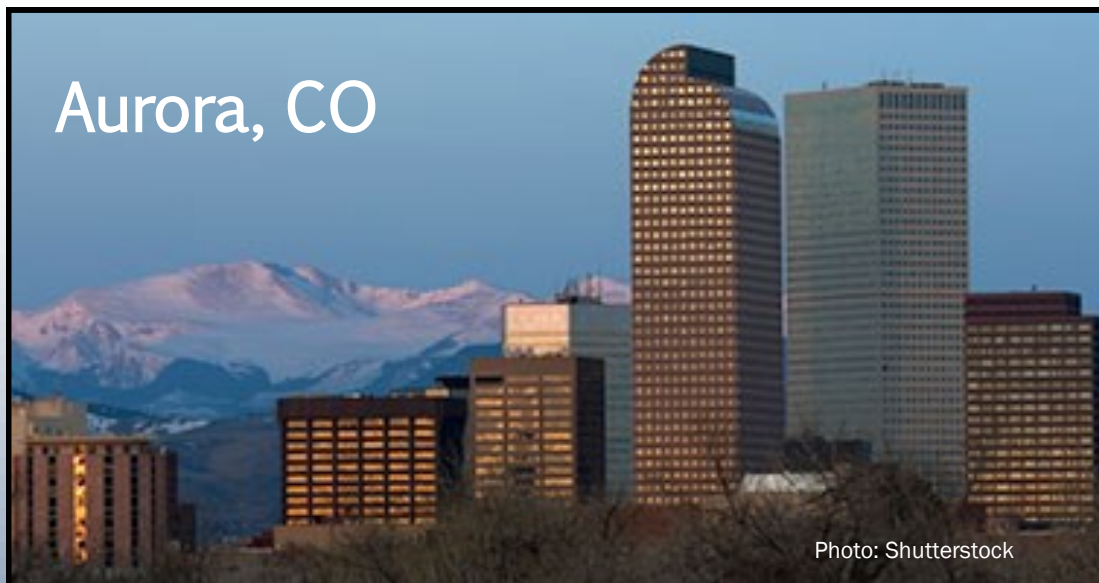
Photo courtesy of retroroadtrips.com

Two gray t-shirts are shown side-by-side. The t-shirt on the left has a small NADE logo on the chest. The t-shirt on the right has a larger NADE logo on the chest, featuring the same mountain, city skyline, and text as the main logo.

ORDER YOUR CONFERENCE T-SHIRTS
NOW!

\$17 each for size S thru XL
\$19 for 2XL

See page 16, Activities Registration Form



REGISTER NOW!

NATIONAL TRAINING CONFERENCE AGENDA**NADE: Mile High Excellence****Radisson Hotel, Denver CO****August 14 – 17, 2016****Sunday, August 14**

- | | |
|-------------------|---|
| 9:00 am – 5:00 pm | Conference Registration |
| 9:00 am – 5:00 pm | 2015-2016 NADE Board of Directors Meeting (Old Board) |
| 6:00 pm – 9:00 pm | President's Reception |

Monday, August 15

- | | |
|---------------------|---|
| 7:00 am – 4:00 pm | Conference Registration |
| 7:30 am – 8:00 am | First Time Conference Attendees Meeting |
| 8:00 am – 8:30 am | Opening Ceremonies for 2015 NADE National Training Conference
Color Guard
Vicki Johnson, Director, Denver DDS |
| 8:30 am – 9:15 am | Sharon Summers, NADE President's Address |
| 9:15 am – 10:15 am | Nancy Berryhill, SSA Deputy Commissioner for Operations |
| 10:15 am – 10:30 am | Networking |
| 10:30 am – 11:30 am | Ann Robert, SSA Associate Commissioner, Office of Disability Determinations |
| 11:30 am – 1:00 pm | Lunch on your own
NADE Board/NCDDD Luncheon |
| 1:00 pm – 2:00 pm | Joelle Brouner, Director of Community Access, Division of Vocational Rehabilitation, Keynote Speaker |
| 2:00 pm – 3:00 pm | Sara Sexton, PsyD, Adverse Childhood Experiences Test Study |
| 3:00 pm – 3:15 pm | Networking |
| 3:15 pm – 4:15 pm | Richard Weir, PhD, Prosthetics and 3D Technology |
| 4:15 pm – 5:00 pm | NADE Membership Meeting |

Tuesday, August 16

7:00 am – 4:00 pm	Conference Registration
8:00 am – 9:00 am	Gina Clemons, SSA Associate Commissioner for the Office of Disability Policy
9:00 am – 10:00 am	Phil Gambino, SSA Senior Advisor to the Deputy Commissioner for Operations
10:00 am – 10:15 am	Networking
10:15 am – 11:15 am	Amelia Barrett, MD, Migraines, Diagnosis and Treatment
11:15 am – 12:00 pm	NCDDD Presentation
12:00 pm – 1:30 pm	Awards Luncheon
1:30 pm – 2:15 pm	Mark Berkowitz, PhD, Cognitive Issues Related to TBI and CVA
2:15 pm – 3:15 pm	Virginia Thommen, MD, Arm Impairments and RFC Restrictions Council for Chapter Presidents Meeting, Thomas Gautier
3:15 pm – 3:30 pm	Networking
3:30 pm – 4:00 pm	Regional Caucuses
4:00 pm – 5:00 pm	General Membership Meeting

Wednesday, August 17

7:00 am – 9:00 am	Registration
8:00 am – 9:00 am	Michael Canham, MD, Pulmonary Pitfalls and Update
9:00 am – 9:45 am	CDI
9:45 am – 10:00 am	Networking
10:00 am – 11:00 am	Jessica LaBudda, LSW, MSW, Dept of Veterans Affairs, PTSD 101 For All Domains
11:00 am – 12:00 pm	Thomas Eickmann, MC, New Trends in Joint Replacements
12:00 pm – 1:00 pm	Lunch on your own
1:00 pm – 2:00 pm	Patrick Gaines, Executive Director of the Gates Center for Regenerative Medicine, Adult Stem Cell Cancer Research
2:00 pm – 3:00 pm	Donor Alliance Presentation
3:00 pm – 3:15 pm	Networking
3:15 pm – 4:00 pm	Freedom Service Dogs of America
4:00 pm – 4:15 pm	Closing Ceremony and Passing of the Gavel
4:15 pm – 4:30 pm	Tonya Scott, NADE President's Remarks
5:00 pm – 9:00 pm	2016 – 2017 NADE Board of Directors Meeting (New Board)

MILE HIGH EXCELLENCE 2016 NATIONAL TRAINING CONFERENCE REGISTRATION FORM

August 15 – 17, 2016

RADISON HOTEL: <https://www.radisson.com/aurora-hotel-co-80014>

Room Reservations must be made by 7/29/16 – Please refer to NADE

Register online at www.cadeonline.net or by mail

Last Name: _____ First Name: _____
 Address: _____ Phone: _____
 City: _____ State _____ Zip _____
 NADE Chapter/Region: _____ Job Title _____ Email _____

Registration Fees: Early registration ends 7/15/16

FULL CONFERENCE	NADE Members	\$190	_____
	Non-Members	\$240	_____
DAILY REGISTRATION	NADE Members	\$75	Mon_____ Tues_____ Wed_____
	Non-Members	\$95	Mon_____ Tues_____ Wed_____

Late Registration 7/16/16 and after

FULL CONFERENCE	NADE MEMBERS	\$225	_____
	Non-Members	\$275	_____
DAILY REGISTRATION	NADE Members	\$95	Mon_____ Tues_____ Wed_____
	Non-Members	\$115	Mon_____ Tues_____ Wed_____

For the following items, check the line next to the event you plan to attend/bring a guest :

Sunday President's Reception __ self __ guest (\$45)

Monday NADE Board and Administrator's luncheon ____ (Current NADE board members and administrators only.)

Tuesday Awards Luncheon Self: Chicken __ Vegetarian __ Guest (\$35) Chicken __ Vegetarian __

Total Conference Registration Fees (including guests): \$ _____

Is this your first NADE Conference? Yes _____ No _____

Mail Registration form and check payable to CADE to:

CADE c/o Disability Determination Services

3190 S Vaughn Way, Suite 500

Aurora, CO 80014

Attn: Paul Absalon, Conference Treasurer

Please write "registration" on your check's memo line

NADE NATIONAL TRAINING CONFERENCE

ACTIVITY SIGN UP FORM

AUGUST 14 – 17, 2016

SUN 8-14 TOUR OF GOLDEN, CO

Bus tour to Golden, CO to include: beautiful Red Rocks Amphitheater, lunch at an authentic Mexican restaurant and a tour of Coors Brewery with tastings and shopping in their gift shop. Enjoy views of the beautiful Rocky Mountains.

Meet in hotel lobby

Bus departs at 9:00 am and returns to hotel at 4:00 pm

Cost \$80_____ Number of guests @ \$80 _____

MON 8-15 BUS TRIP TO BLACK HAWK CASINOS

Dinner buffet at The Mardi Gras Casino and games in Black Hawk, CO

Meet in hotel lobby

Bus departs at 6:00 pm and leaves Black Hawk at 10:00 pm

Cost \$50.00_____ Number of guests @ \$50 _____

TUES 8-16 DINNER AT CHERRY CREEK RESERVOIR RESTAURANT

Buffet dinner at the Tiki Bar and Restaurant with karaoke after

Meet in hotel lobby

Bus departs at 6:00 pm and returns at 8:30 pm and 10:00 pm

Cost \$30_____ Number of guests @ \$30_____

T-Shirts: \$17 sizes S thru XL, \$19 for 2XL. Indicate sizes and number of shirts:

Small_____Medium_____Large_____XLarge_____2XLarge_____

TOTAL COST FOR ACTIVITIES AND T-SHIRTS \$_____

You may register online or by mail. You must pay by check.

Make check payable to: CADE

Mail check to: Disability Determination Services

3190 S Vaughn Way, Suite 500

Aurora, CO 80014

Attn: Paul Absalon, Conference Treasurer

Please write "activities" in the memo line of your check.

Opportunities Abound in Oregon!

Oregon DDS will soon recruit experienced **Examiners** and **Medical Consultants**.

Join our innovative, successful and results-oriented staff in Salem, Oregon's capital city. Oregon offers many cultural and outdoor activities. The beautiful Oregon Coast, the Cascade Mountains, and metro Portland are each just an hour away!



Examiner Salaries: \$3,339 - \$5,355/mo

Medical Consultant: \$7,127 - \$10,462/mo

System Manager: \$5,894 - \$8,687/mo

... plus generous benefits!

Find applications for Examiners and Medical Consultants at: <http://www.oregonjobs.org>.

For more information on Examiner positions, please contact Jay Minten at 503-986-4803 or jay.minten@ssa.gov. We plan to interview and hire examiners in summer with a start date in late September.

For more information on Medical and Psychological Consultant positions, please refer to the recruitments at <https://www.governmentjobs.com/careers/oregon/jobs/1316149/medical-consultant-medical-consultant> or <https://www.governmentjobs.com/careers/oregon/jobs/1316706/medical-consultant-psychological-consultant>. You can also contact Heather Emberson at 503-986-4941 or heather.emberson@ssa.gov.

Nevada Bureau of Disability Adjudication



Nevada Bureau of Disability Adjudication is recruiting for current and upcoming openings for several key positions. If you are interested in a positive, progressive, workplace committed to success, then Nevada is the right place for you. Come join our agency at two locations: Northern Nevada—Carson City office, just 30 minutes from beautiful Lake Tahoe, or Southern Nevada—Las Vegas office in downtown Las Vegas!

Please visit Nevada's state job listing recruitment page at:
<https://nvapps.state.nv.us/NEATS/Recruiting/>

Look for job listings under:

Employment Training and Rehabilitation;
Rehabilitation Division;
Bureau of Disability Adjudication:
In Las Vegas and Carson City

- Rehabilitation Manager I— Medical \$52,387—\$78,341
- IT Professional II \$50,196—\$74,813 salary
- Disability Adjudication Supervisor \$46,019—\$68,361
- Disability Adjudicator III \$42,323.76—\$62,577
- Disability Adjudicator I \$37,291—\$54,747
- Rehabilitation Technician 2 \$33,011—\$48,087



CORPORATE MEMBERS

Visit <http://www.nade.org/about-nade/nade-corporate-members/> for information about becoming a corporate member.

Social Security Disability Representation ~ Medicare Advisor



**Gold
Corporate Member**

Allsup--the nation's premier Social Security
disability claim services company

300 Allsup Place, Belleville, IL 62223 | (800) 854-1418



THE IMA GROUP

Barbara J. Young
Vice President of Business Development

660 White Plains Road Tarrytown, NY 10591
(518) 527-8487 CELL (800)245-4245 EXT 319

barbara.young@ima-us.com

Gold Corporate Member

Gold Corporate Member



Delivering Quality Disability Evaluations on a Timely Basis

1701 W 2450 S
Ogden, Utah 84401

Call: 1.800.548.9092
Contact: Mike Powell

www.mdsiphysicians.com

a NADE Gold Corporate Member

Established in 1981



NATIONWIDE PROVIDER OF
DISABILITY EVALUATIONS

21700 Copley Drive
Diamond Bar, CA 91765

800.260.1515

Gold Corporate Member

Human Performance in Industry

Physical Therapists

Arlington, WA

(360) 435-8989

Silver Corporate Member



The Eligibility Experts

<http://decorm.com/>

1-866-441-DECO

Get your NADE merchandise here!



Travel to national conferences in style with this handsome carrying case! **Only \$15**



Pack your lunch in our insulated cooling bag, and be the coolest staffer in the lunch room! **Only \$5**



Show your NADE spirit with this jaunty cap, and be the envy of all! **Only \$10**



You're very important, with lots of important things to do and places to be! That's why you need this deluxe expandable laptop briefcase! **Only \$30**



Add some flair to your work wardrobe with this stylish lapel pin! **Only \$5**

contact:

ORDER NOW!

cynthia.thompson@ssa.gov

NADE BOARD OF DIRECTORS 2015-2016

President Sharon Summers 912 Waynewood Lane Hermitage, Tn 37076 615.743.7618 NADE.President@gmail.com	Past President Jeff Price 9404 N Manor Drive Zebulon, NC 27597 919.814.2453 Fax: 919.212.3155 NADE.PastPresident@gmail.com	President-Elect Tonya Scott P O Box 1887 Stockbridge, GA 30281 678.639.2411 Fax: 678.639.2450 NADE.PresidentElect@gmail.com	Secretary Crystal Bach 6813 W 6th St. Sioux Falls, SD 57107 605.929.0845 NADE.Secretary@gmail.com	Treasurer Julie Kujath 1500 Southridge Drive Suite 100 Jefferson City, MO 65109 573.526.2250 Fax 573.526.3788 NADE.Treasurer@gmail.com
				
Great Lakes Marcia Shantz 1134 Claremont St Dearborn MI 48124 313.456.6821 NADE.RD.GreatLakes@gmail.com	Great Plains Kimberly Underwood 726 Belair Drive Jefferson City, MO 65109 573.522.6212 NADE.RD.GreatPlains@gmail.com	Mid-Atlantic Betsy Slease 612 S. Jefferson St. Suite 300 Roanoke, VA 24011 540.857.7754 NADE.RD.MidAtlantic@gmail.com	Northeast Alice Rich 31 Hollis Road East Brunswick, NJ 08816 973.648.3533 NADE.RD.Northeast@gmail.com	Pacific Marjorie Garcia 3150 Lancaster Dr Salem, OR 97305-1350 503.986.4902 NADE.RD.Pacific@gmail.com
				
Southeast Jennifer Pounds 1004 Shae Court Garner, NC 27529 919.814.2832 Fax: 800.851.3065 NADE.RD.Southeast@gmail.com	Southwest Dean Crawford 1618 Downing Street The Village, OK 73120 405.419.2579 Fax: 405.419.2760 NADE.RD.Southwest@gmail.com	Legislative Jennifer Nottingham 2215 9th Avenue Apt C Helena, MT 59601 406.444.3838 NADE.LegislativeDirector@gmail.com	Membership Melissa Williamson 5714 Blanford St Birmingham, AL 35210 205.989.2100 NADE.Membership@gmail.com	Council of Chapter Presidents Chair Thomas Gautier 2530 Old English Lane Kingston, NC 28504 919.814.2612 NADE.CPPChair@gmail.com
				

NADE COMMITTEE CHAIRPERSONS 2015-2016

Awards Trish Chaplin 1451 Becker Drive Arnold, MO 63010 314.416.2805 patricia.chaplin@ssa.gov	Constitution & Bylaws Richard Todd Deshong 701 Pike Street Seattle, WA 98101 206.818.0383 richard.deshong@ssa.gov	DDS Administrators/SSA Liaison Ruann Parker 3814 S Quemoy Way Aurora, CO 80018 303.368.4100 NADE.dds.ssaliaison@gmail.com	Elections and Nominations Erin P. Vincent 1664 W Glenn Ave Springfield, IL 62704 217.785.2205 erin.p.vincent@ssa.gov
Hearing Officer Kyle Lawrence 1432 Haydon St Salem, VA 24153 540.857.7787 kyle.lawrence@ssa.gov	Medical Consultant J. Scott Pritchard D.O. 3150 Lancaster Dr. NE Salem, OR 97305-1350 503.986.4962 Fax: 503-373-7202 scott.pritchard@ssa.gov	National Disability Professionals Week Marcia Golden 3045 Winding Waters Way Raleigh, NC 27614 919.814.2827 mgolden221@yahoo.com	Non-Dues Revenue Cynthia Thompson 9801 N Kelley Oklahoma City, OK 73131 405.419.2573 Fax: 405.419.2573 cynthia.thompson@ssa.gov
Organ Donation/Transplant Hope Shaw 1408 Shelton Avenue Nashville, TN 37216 615.743.7921 hope.y.shaw@ssa.gov	Professional Development Sharon Bland-Brady 12920 Avondale Apartment 101 Detroit, MI 48215 313.410.1653 sharon.bland-brady@ssa.gov	Professional Relations Officer Gary Perry 734 Arbor Springs Dr Mt Juliet, TN 37122 615.743.7773 gary.w.perry@ssa.gov	Retirees Marty Marshall 2704 Frank Street Lansing, MI 48911 517.882.8073 naderetirees@aol.com



Strategic Plan Anne Graham 1316 Glenmont Road Baltimore, MD 21239-1232 410.821.8912 agbluewindow@gmail.com	Support Staff Committee Glenda Dunn 5619 Turnbridge Wells Court Lithonia, GA 30058 678.639.2312 dunnglendaj@gmail.com	Systems Michael J Pringle 3224 Shadow Walk Lane Tucker, GA 30084 678.639.2149 michael.pringle@ssa.gov
---	---	---

ADVOCATE STAFF

EDITOR: Korin Gary

503.986.4914

NADE.communications@gmail.com

Letters to the Editor and story ideas are welcome. All correspondence should be directed to the editor by July 1st for inclusion in the summer issue.

REGIONAL REPRESENTATIVES:**Great Lakes Sharyn Perry**

614.468.1317

Sharyn.perry@ssa.gov

Northeast Debi Chowdhury

518.626.3211

NADE.RD.northeast@gmail.com

Great Plains Frances Buena

800.658.2272 x106

Frances.Buena@ssa.gov

Southeast Rosalyn Layton-Walton

601.853.5621

Rosalyn.l.walton@ssa.gov

Southwest Cynthia Thompson

405.419.2532

Cynthia.thompson@ssa.gov

Mid-Atlantic Jessica Swanson

540.512.1927

Jessica.swanson@ssa.gov